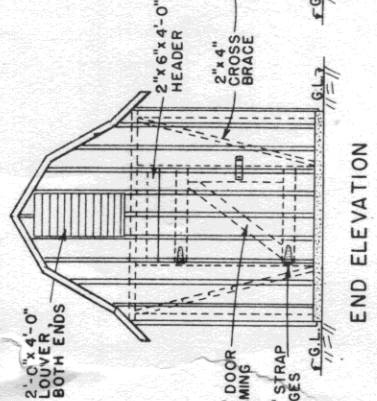
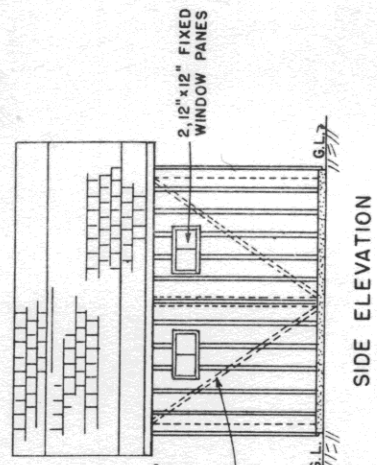
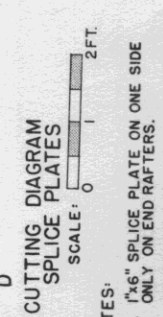
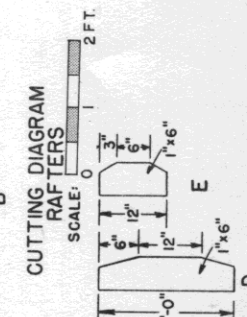
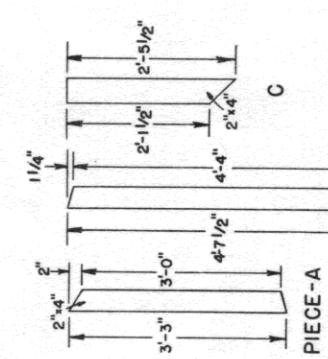


V.P.I. PLAN N-1.06



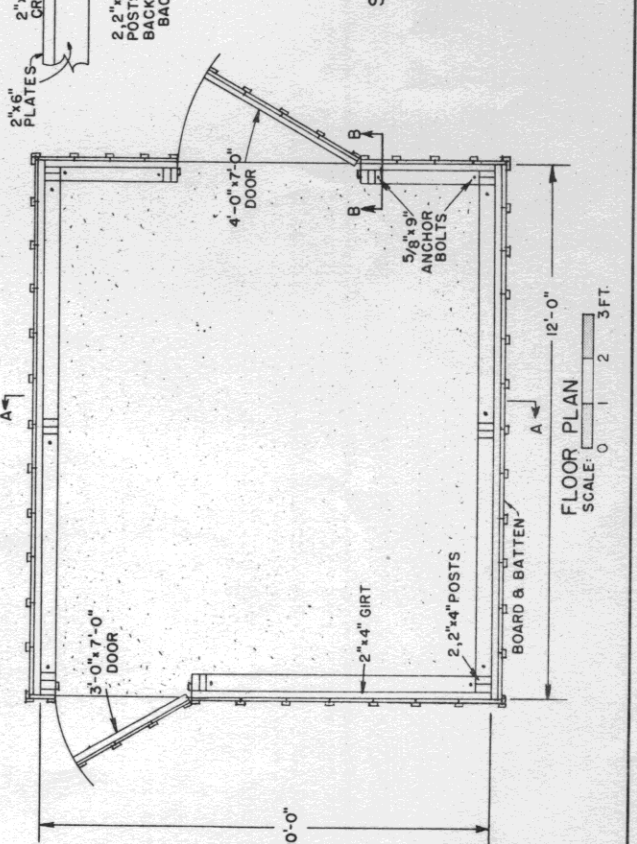
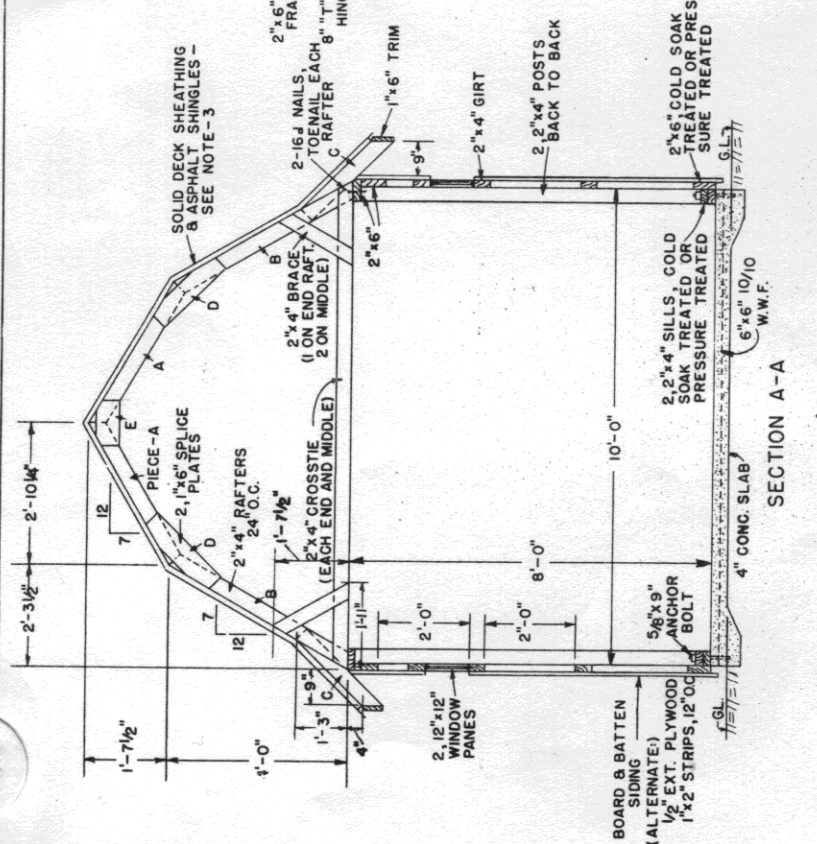
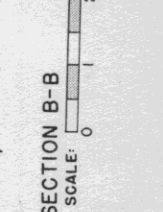
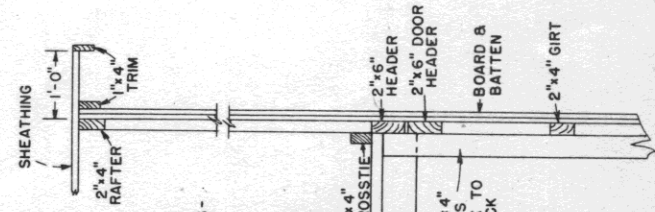
BILL OF MATERIALS

4	-	2" x 4" x 8'	Treated
4	-	2" x 4" x 12'	Treated
2	-	2" x 6" x 10'	Treated
2	-	2" x 6" x 12'	Treated
18	-	2" x 4" x 8'	
10	-	2" x 4" x 10'	
10	-	2" x 4" x 12'	
5	-	2" x 6" x 10'	
5	-	2" x 6" x 12'	
8	-	1" x 6" x 10'	
2	-	1" x 6" x 12'	
24	-	1" x 12" x 8'	
4	-	1" x 12" x 10'	
8	-	1" x 12" x 12'	
8	-	1" x 12" x 14'	
500	lin. ft.	1" x 5" Battens	
2 1/2	yd.	5 bag mix concrete	
500	bd. ft.	1" sheathing	
5	squares	asphalt building paper	
5	squares	25# asphalt shingles	
8	-	12" x 12" window panes	
64	lin. ft.	quarter-round	
2	sets	2 ea. 9" strap hinges	
8	with	screws	
12	-	8/9" x 2" screws	
180	ea.	1/2" x 6" x 8" 10/10 W.W.F.	
31 1/2	ea.	20d nails	
16 1/2	ea.	8d nails	



NOTES:

1. 1"x6" SPLICE PLATE ON ONE SIDE ONLY ON END RAFTERS.
2. 2"x4" CROSSIE ON EACH END AND ON CENTER RAFTER.
3. SOLID DECK SHEATHING, 1" BOARDS 14'-0" LONG, 12" OVERHANG. 25# ASPHALT SHINGLES OVER ASPHALT BUILDING PAPER. ALT. #8 PLYWOOD SHEATHING.



FLOOR PLAN
 SCALE: 0 2 3 FT.

SECTION B-B
 SCALE: 0 2 FT.

CUTTING DIAGRAM RAFTERS
 SCALE: 0 2 FT.

CUTTING DIAGRAM SPLICE PLATES
 SCALE: 0 2 FT.