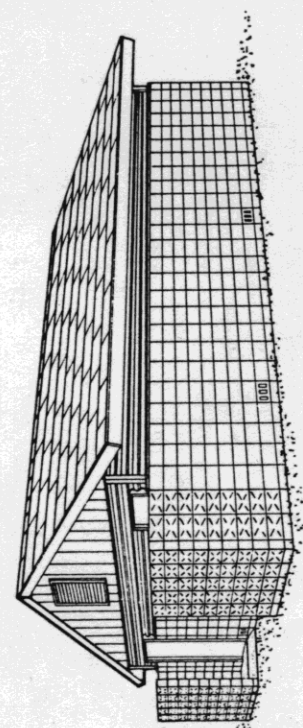


FINISH  
 INTERIOR - FINISH BLOCKS WITH  
 COATING OF EPOXY PAINT  
 EXTERIOR - (IF DESIRED) CEMENT  
 WATER PAINT

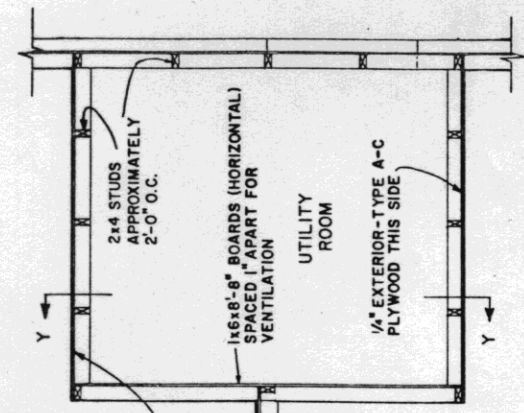


FACILITIES FOR 50 CAMPSITES  
 CONSULT STATE AND LOCAL AUTHORITIES  
 BEFORE STARTING CONSTRUCTION

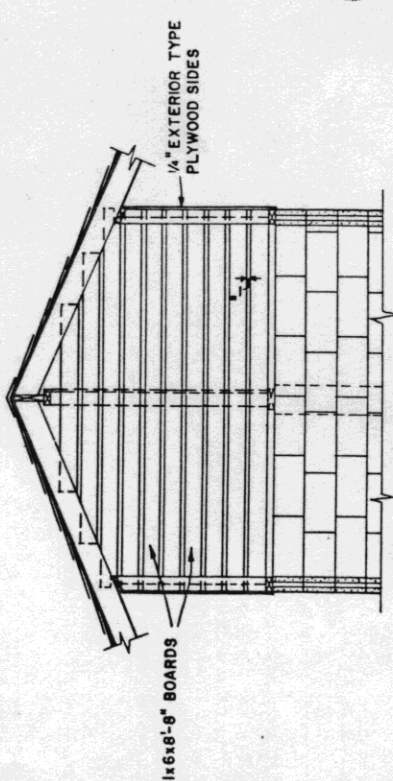
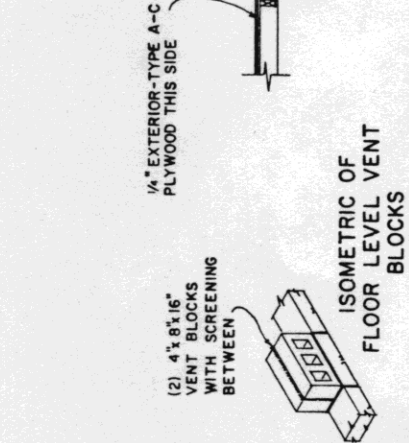
COOPERATIVE EXTENSION WORK IN  
 AGRICULTURE AND HOME ECONOMICS  
 DEPARTMENT OF AGRICULTURAL ENGINEERING  
 UNIVERSITY OF MARYLAND  
 UNITED STATES DEPARTMENT OF AGRICULTURE COOPERATING

COMFORT STATION	
N. J.	'71
6123	SHEET 1 OF 3

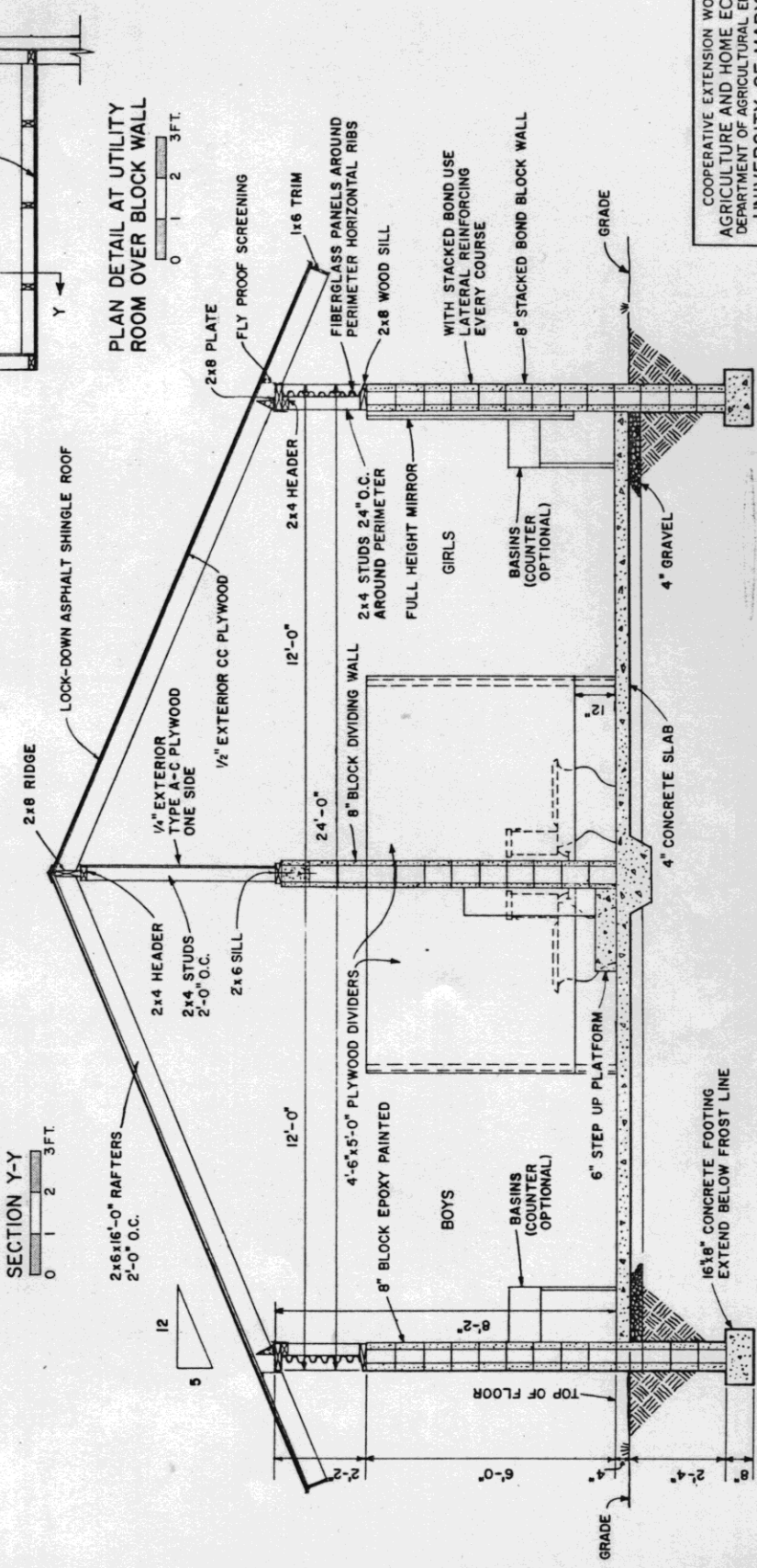
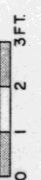
BASED ON: RUTGERS - THE STATE UNIVERSITY  
 NEW JERSEY PLAN NO. 149



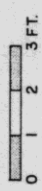
PLAN DETAIL AT UTILITY ROOM OVER BLOCK WALL

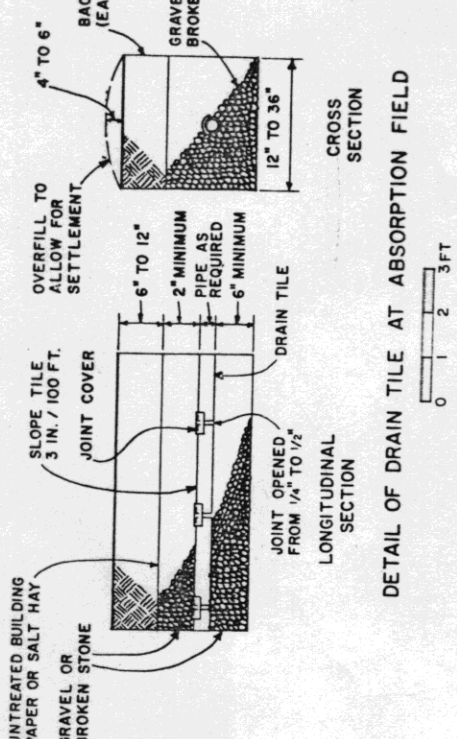
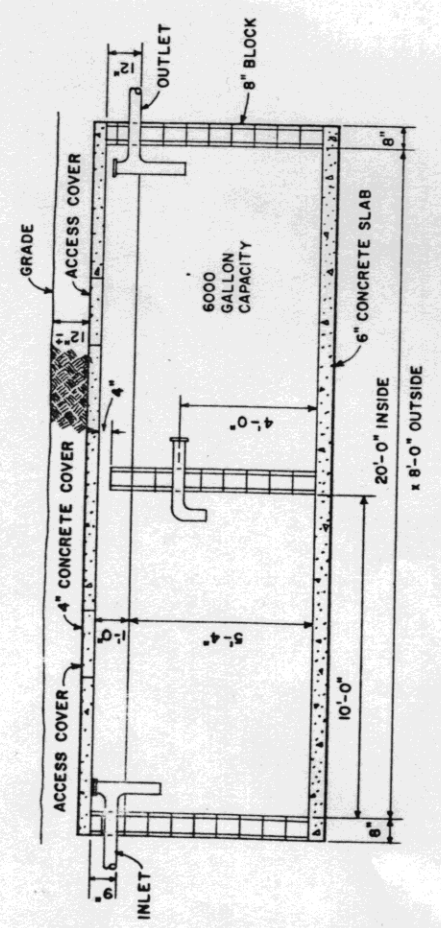


SECTION Y-Y



SECTION X-X





**50 CAMPSITES**

4 PERSONS PER CAMPSITE  
 35 GALLONS WATER PER PERSON PER DAY  
 6000 GALLON SEPTIC TANK REQUIRED MINIMUM  
 DRAINAGE FIELD SIZE DETERMINED BY PERCOLATION TEST - SEE AGRICULTURAL INFORMATION BULLETIN #274  
 "FARMSTEAD SEWAGE AND REFUSE DISPOSAL"  
 7000 GALLON/DAY WATER REQUIREMENT  
 40 GPM PUMP CAPACITY AT 25-45 POUNDS PRESSURE

4 SHOWERS AT 5 GPM = 20  
 11 BASINS AT 4 GPM = 44  
 3 URINALS AT 5 GPM = 15  
 10 WATER CLOSETS AT 3 GPM = 30  
 TOTAL - 109 GPM

ASSUME WORST CONDITION OF 4 SHOWERS, 2 BASINS, 1 URINAL, 2 WATER CLOSETS RUNNING AT ONE TIME OR 40 GPM AT 40 PSI  
 60 GALLON HOT WATER HEATER REQUIRED  
 GAS FIRED OR EQUIVALENT.

