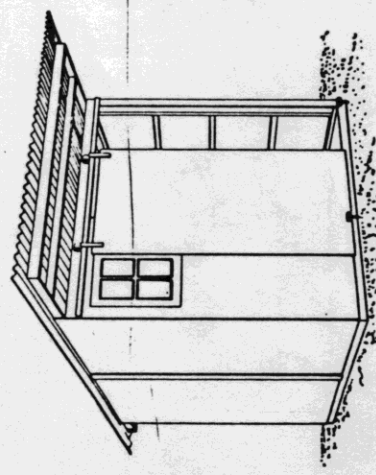
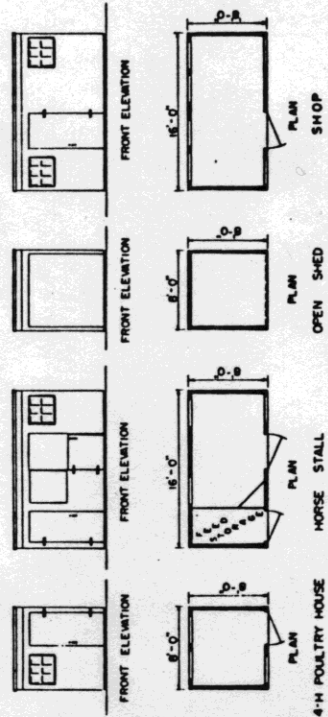


**USES OF UTILITY SHED**

- I. GENERAL**  
 1 ALL JOINTS MAY BE CALKED TO PROVIDE A MORE WEATHER PROOF STRUCTURE.  
 2 DOORS MAY BE SLIDING OR SWING TYPE.  
 3 CONCRETE OR WOOD FLOOR SHOWN ON SHEET No. 2.
- II. TOOL SHED 8'-0" x 8'-0" (SHOWN ABOVE)**  
 III. 4-H-20 BIRD POULTRY HOUSE 8'-0" x 8'-0"  
 1 USE 2" INSULATION WITH VAPOR BARRIER IN WALLS & CEILING.  
 2 INTERIOR FINISH SHOULD BE DRYWALL, CLEANED MATERIAL.  
 3 PROVIDE SCREENS FOR DOORS & WINDOWS (IF MESH DESIRED)
- IV. HORSE STALL OR SHEEP PEN 8'-0" x 16'-0"**  
 1 STALL AREA INTERIOR, FINISHED WITH 1/2" PLYWOOD  
 2 PLANK FLOOR RECOMMENDED
- V. SHOP**

**NOTE**  
 BATTENS, RAFTER TRIM, SOFFITS, & FASCIA  
 TO BE CUT FROM 1 SHEET OF 1'-4"-0" x 8'-0"  
 EXTERIOR PLYWOOD & WASTE FROM THE  
 SIDING USED ON THE SIDE & REAR PANELS



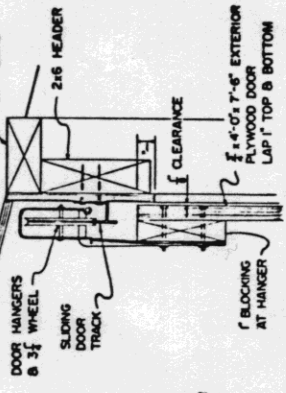
UNIV. OF CONN. PLAN No. 302  
 COOPERATIVE EXTENSION WORK IN  
 AGRICULTURE AND HOME ECONOMICS  
 STATE OF NORTH DAKOTA  
 NORTH DAKOTA STATE UNIVERSITY  
 DEPARTMENT OF AGRICULTURE AND  
 HORTICULTURE

UTILITY SHED  
 CONN. '70 6100 SHEET 1 OF 2

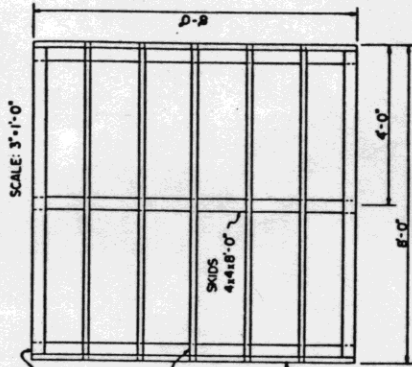
**BILL OF MATERIALS**

ITEM	PCS.	SIZE	AMOUNT
CONCRETE FLOOR	1	8'-0" x 8'-0" x 4"	1 CU YD
CONCRETE	14	3/4" x 8"	14 EA
ANCHOR BOLTS	8	2 x 4 x 8"	27 FBM
OPTIONAL WOOD FLOOR	2	2 x 4 x 8"	16 FBM
JOIST	5	4 x 8 x 16"	54 FBM
END JOIST & SKIDS	2	1/2" x 4'-0" x 8'-0"	2 SHEETS
FLOORING, EXTERIOR PLYWOOD	2	1/2" x 8"	2 EA
EYE BOLTS	164	1/2" x 8"	1 1/2 LBS.
NAILS, COMMON	64		3/4 LB.
2 REAR PANELS	4	2 x 4 x 8"	16 FBM
STUDS	10	2 x 4 x 8"	27 FBM
SILL, GIRTS, & PLATE	2	2 x 4 x 8"	32 FBM
SASH BLOCKING	2	2 x 4 x 8"	8 FBM
SIDING, EXTERIOR PLYWOOD	2	1/2" x 8'-0" x 8'-0"	2 SHEETS
BATTEN, EXTERIOR PLYWOOD	1	1" x 3' x 8'-0"	1 STRIP
WINDOW	1	1'-8" x 3'-0"	1 EA
NAILS, COMMON	164		1 1/2 LBS.
NAILS, GALVANIZED	64		3/4 LB.
4 SIDE PANELS	10	2 x 4 x 8"	27 FBM
GIRTS & SILL	2	2 x 4 x 8"	32 FBM
FRONT & CENTER STUDS	2	2 x 4 x 8"	8 FBM
REAR STUDS	4	1/2" x 4'-0" x 8'-0"	4 SHEETS
SIDING, EXTERIOR PLYWOOD	2	1/2" x 8'-0" x 8'-0"	2 SHEETS
BATTENS, EXTERIOR PLYWOOD	2	1/2" x 3' x 8'-0"	2 STRIPS
RAFTER TRIM, FRONT	2	1/2" x 4' x 8"	2 LBS.
RAFTER TRIM, REAR	2	1/2" x 4' x 8"	2 LBS.
RAILS, GALVANIZED	64		3/4 LB.
1 FRONT PANEL	3	2 x 4 x 8"	16 FBM
STUDS	5	2 x 4 x 8"	14 FBM
SILL, GIRTS, & PLATE	1	2 x 4 x 8"	4 FBM
HEADER	1	2 x 4 x 8"	3 FBM
SASH BLOCKING	1	1/2" x 4'-0" x 8'-0"	1 SHEET
SIDING, EXTERIOR PLYWOOD	1	1/2" x 8'-0" x 8'-0"	1 EA
WINDOW	1	2'-5" x 3'-0"	1 EA
NAILS, COMMON	164		1 LB.
NAILS, GALVANIZED	64		3/4 LB.
1 FRONT PANEL - SLIDING DOOR	3	2 x 4 x 8"	16 FBM
STUDS	1	2 x 4 x 8"	3 FBM
PLATE	1	2 x 4 x 8"	4 FBM
HEADER	1	1/2" x 17'-5"	1 STRIP
SIDING, EXTERIOR PLYWOOD	1	1/2" x 17'-5"	1 STRIP
DOOR, EXTERIOR PLYWOOD	1	1/2" x 14'-0"	1 SHEET
SLIDING DOOR TRACK	1	8'-0" LONG	1 EA
SLIDING DOOR TROLLEYS	2	3" DIA WHEEL	2 EA
DOOR STAY ROLLERS	2	2" DIA WHEEL	2 EA
NAILS, COMMON	164		1 LB.
NAILS, GALVANIZED	64		3/4 LB.
2 ROOF PANELS	4	2 x 4 x 12"	32 FBM
RAFTERS	14	2 x 4 x 8"	38 FBM
GIRTS	1	1/2" x 4'-0" x 8'-0"	1 SHEET
FASCIA, FRONT	1	1/2" x 4'-0" x 8'-0"	1 EA
FASCIA, REAR	1	1/2" x 4'-0" x 8'-0"	1 EA
SOFFIT, FRONT	1	1/2" x 7'-3" x 18'-0"	1 EA
SOFFIT, REAR	1	1/2" x 7'-3" x 18'-0"	1 EA
NAILS, COMMON	164		1 1/2 LBS.
NAILS, GALVANIZED	64		3/4 LB.
2 SCREW SHANK	100		100 EA
BY CRIMP	2		2 SHEETS
ROOFING, ALUMINUM	4	.024" x 30" x 12'-0"	4 EA
FRAMING ANCHORS (AK)	4	18 GAUGE	4 EA
FRAMING ANCHORS (AL)	4	18 GAUGE	4 EA

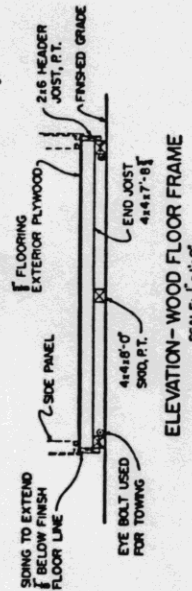
NOTE: SOME TYPES OF SLIDING DOOR HARDWARE REQUIRE LARGER HEADERS TO PROVIDE LAP AT TOP OF DOOR



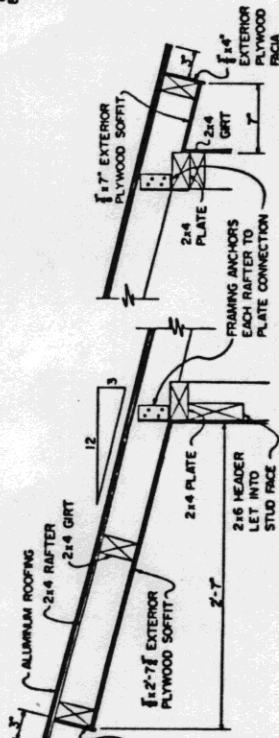
SLIDING DOOR HARDWARE  
SCALE: 3'-1'-0"



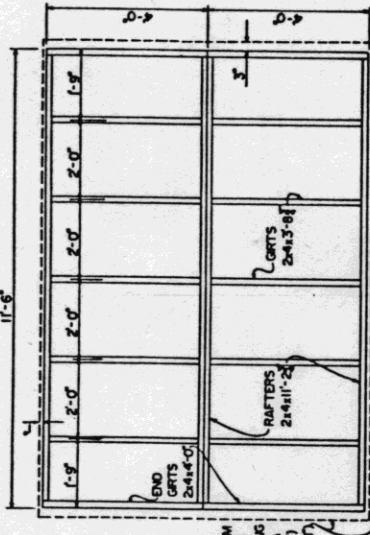
OPTIONAL WOOD FLOORING FRAME  
SCALE: 1'-1'-0"



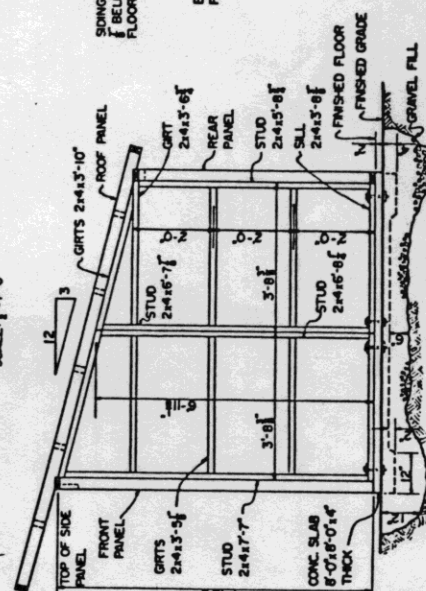
ELEVATION - WOOD FLOOR FRAME  
SCALE: 1'-1'-0"



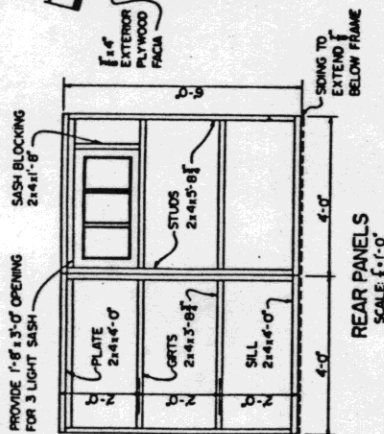
DETAIL - FRONT & REAR CORNICE  
SCALE: 1/2"-1'-0"



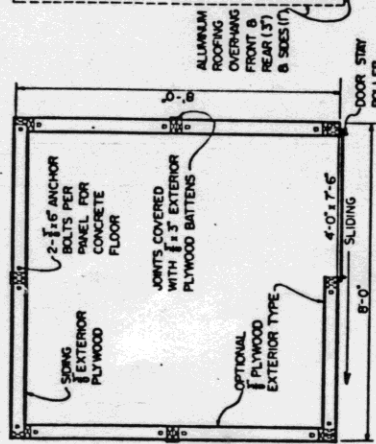
ROOF PANELS  
SCALE: 1'-1'-0"



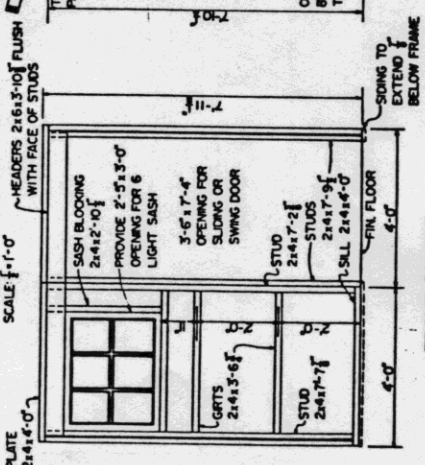
SIDE ELEVATION SHOWING PANELS  
SCALE: 1'-1'-0"



REAR PANELS  
SCALE: 1'-1'-0"



PLAN  
SCALE: 1'-1'-0"



FRONT PANELS  
SCALE: 1'-1'-0"

COOPERATIVE EXTENSION WORK IN AGRICULTURE AND HOME ECONOMICS  
NORTH DAKOTA STATE UNIVERSITY  
DEPARTMENT OF AGRICULTURE AND APPLIED SCIENCES  
UNITED STATES DEPARTMENT OF AGRICULTURE COOPERATING

NOTE: PLYWOOD TO BE NAILED WITH 6d GALVANIZED NAILS 6" O.C. AT EXTERIOR EDGES & 12" O.C. AT INTERMEDIATE JOINTS.

UTILITY SHED  
CONN. 70 6100 SHEET 2 OF 2