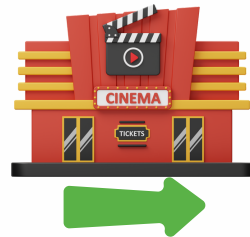


Directions

Go straight on



Go past the
cinema



Turn left



Turn right



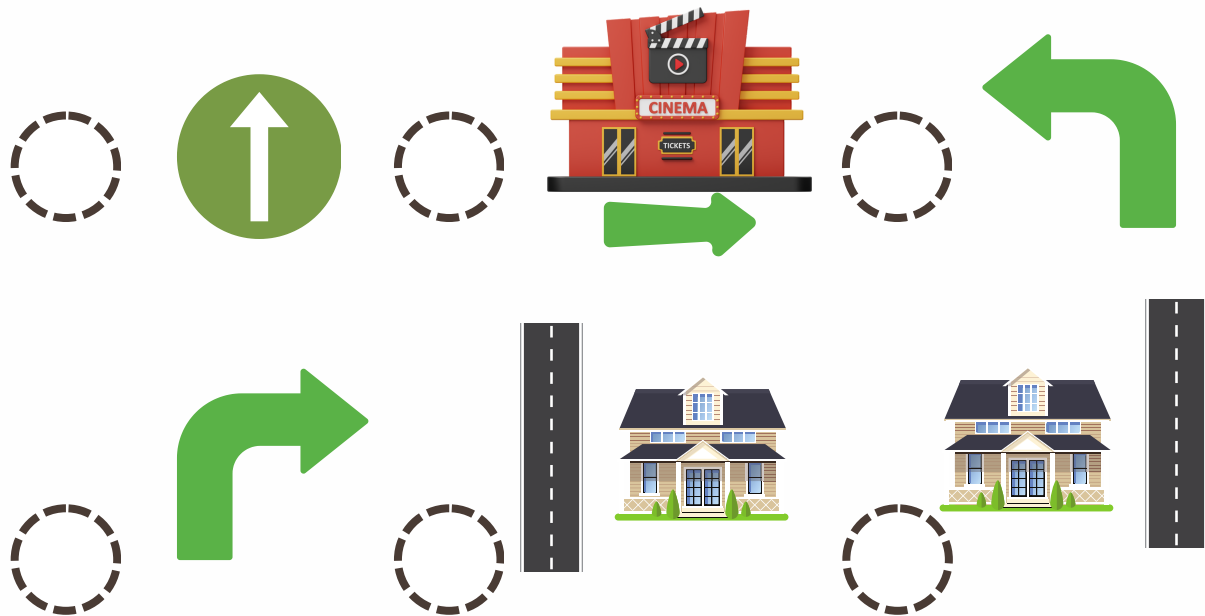
It's on the left



It's on the right



Match



1 Turn left

2 It's on the right

3 It's on the left

4 Turn right

5 Go past the
cinema

6 Go straight on

HOW CAN I GET TO



1. Go straight on and turn right, pass the restaurant and hospital, turn right. It's opposite the library.

You are at the _____

2. Go straight on and turn left, pass the shop, go straight on, turn right. It's on the right. You are at the _____

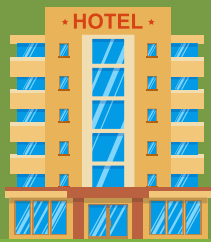
3. Go straight on and turn right, pass the hospital, turn right, go straight on, pass the stadium, turn right. It's next to the bank. You are at the _____

HOW CAN I GET TO

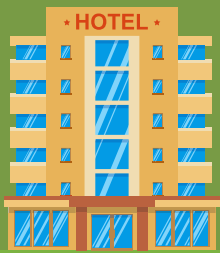
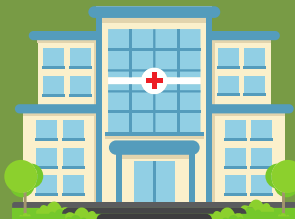


GIVE DIRECTIONS

Directions



Directions



YOU ARE
HERE



Directions

