

**Qui produit - Qui  
consomme ?**



**Jet lag**

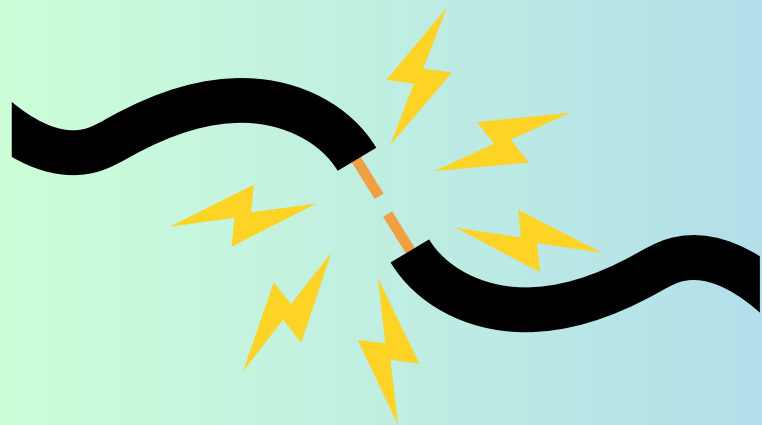


# Un voyage au cœur des métropoles

**Des pôles,  
maîtres des  
échanges**



# La côte a la cote

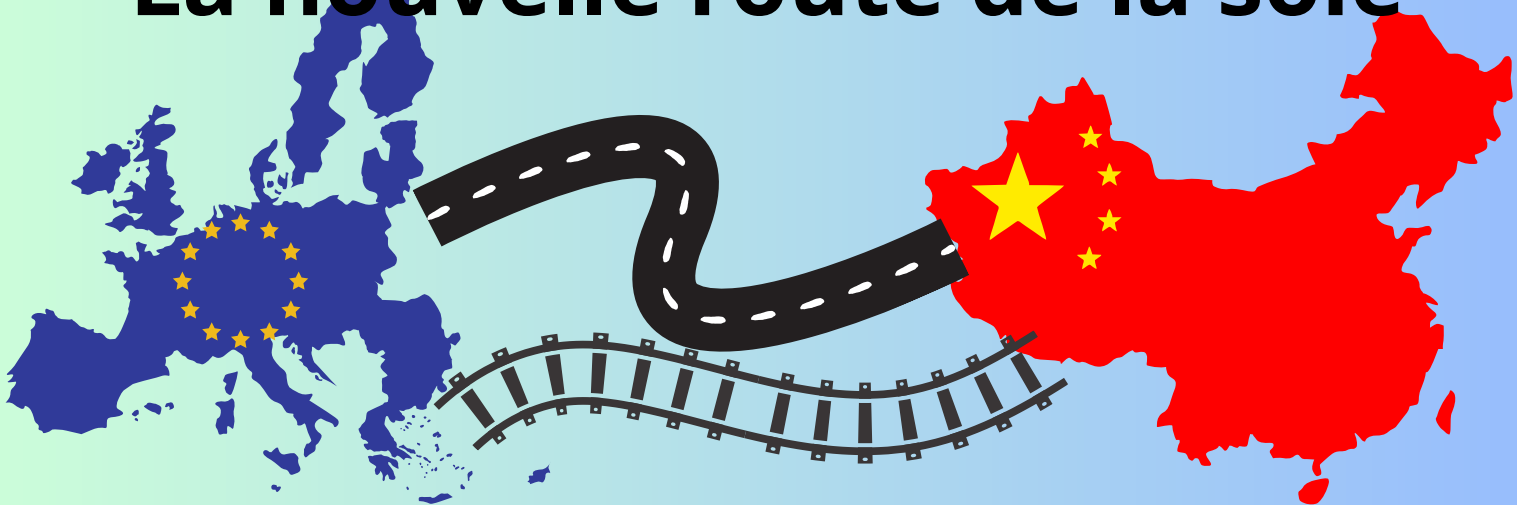


**On a pété  
un câble !**

# A l'abordage !



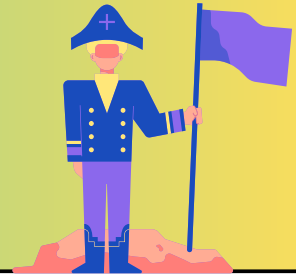
# La nouvelle route de la soie



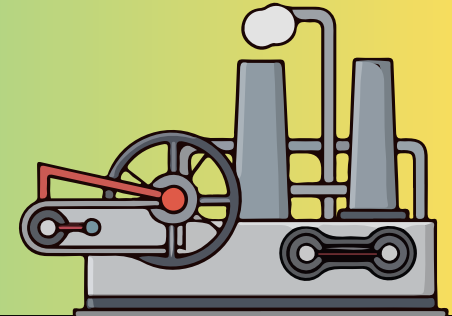
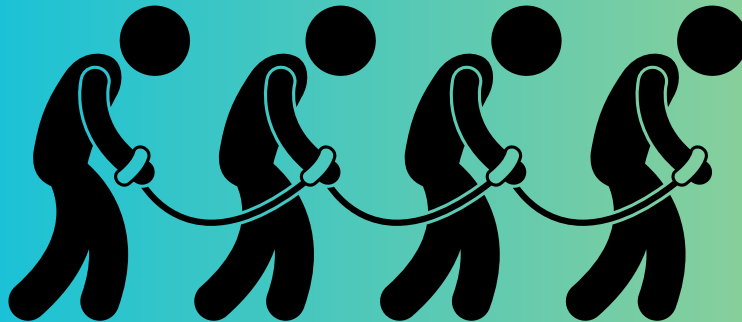


An infographic illustrating the sources of carbon dioxide (CO<sub>2</sub>) emissions. A large, grey, cloud-like shape in the center contains the text "CO<sub>2</sub>". To the left, a collection of colorful icons represents various modes of transportation: cars, trucks, ships, and airplanes. To the right, a detailed illustration shows industrial facilities, including oil rigs, refineries, and power plants, with orange pipes leading from them towards the central cloud. Below the industrial scene, there is a depiction of a forest fire with bright orange flames consuming several trees, while two healthy green trees stand nearby. The entire graphic is set against a light blue background with faint white clouds.

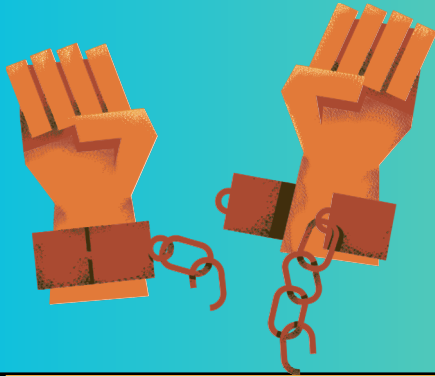
# Représentation artificielle d'acteur.rices du commerce triangulaire



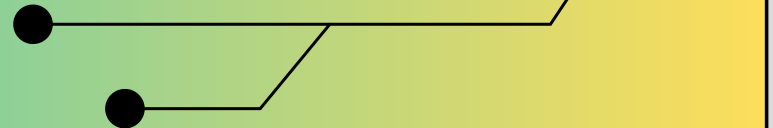
# L'humain, au centre de la chaîne de production du nouveau monde ?




# **Courber l'échine ou lever le poing : alternatives africaines à la domination**



## **Un monde à câbler**

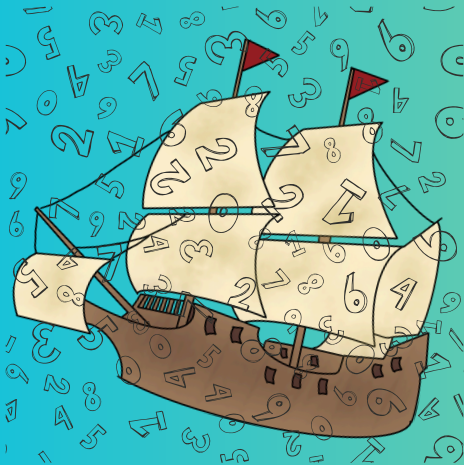




# les zombi(e)s, un héritage du commerce triangulaire



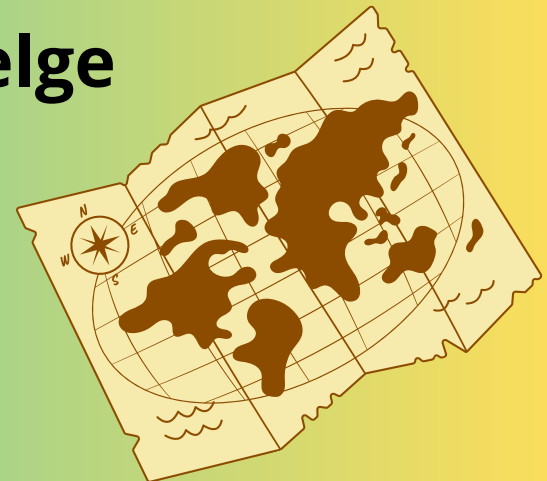
# Un chiffre, une vie



# Tous issus de l'immigration ? Le peuplement de la terre



# Les motivations de l'Empire colonial belge



# **Les conséquences de l'exploitation économique du Congo lors de la période coloniale**



# Les chiffres voyageurs



## Un regard sur les migrations



# Voyage sans frontières



# Les géants du monde





